



Starly

By LuIS

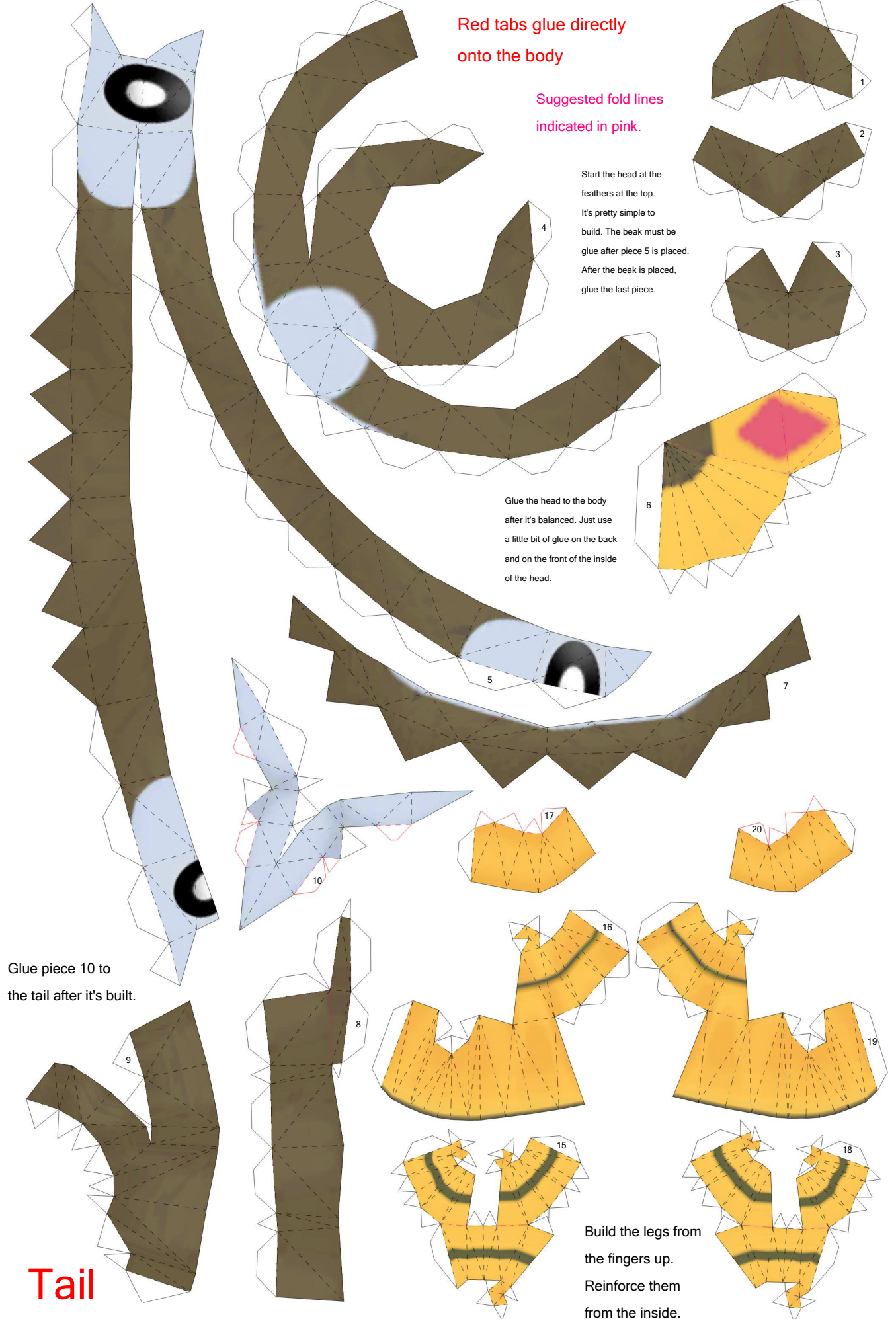
Paper Pokés
www.pokemonpapercraft.net

Red tabs glue directly onto the body

Suggested fold lines indicated in pink.

Start the head at the feathers at the top. It's pretty simple to build. The beak must be glue after piece 5 is placed. After the beak is placed, glue the last piece.

Glue the head to the body after it's balanced. Just use a little bit of glue on the back and on the front of the inside of the head.



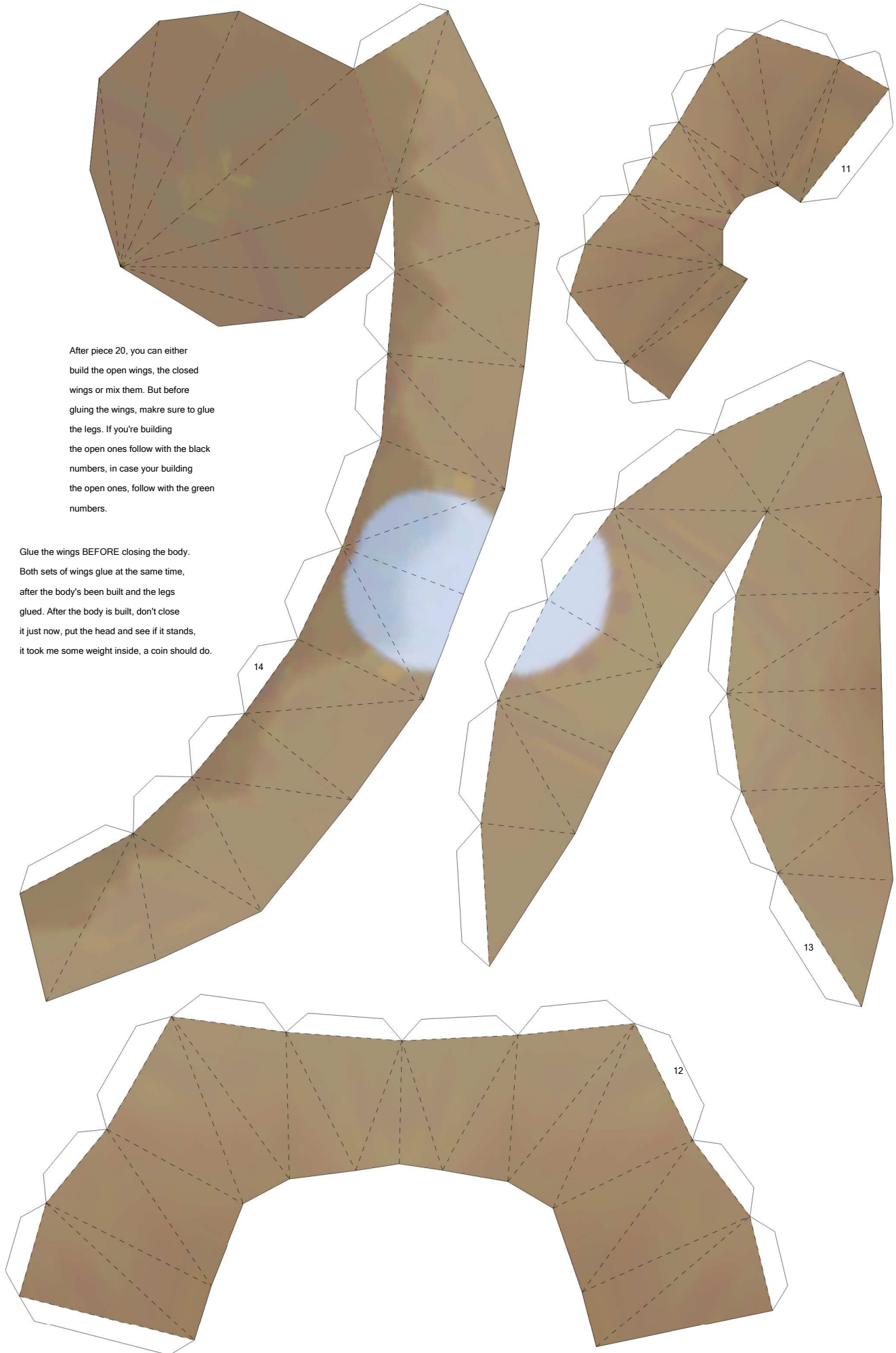
Glue piece 10 to the tail after it's built.

Tail

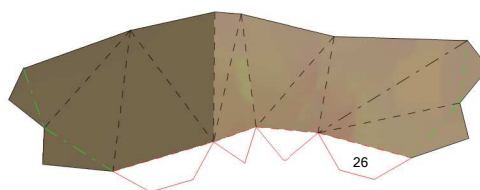
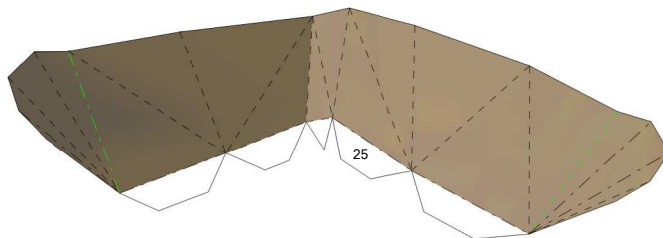
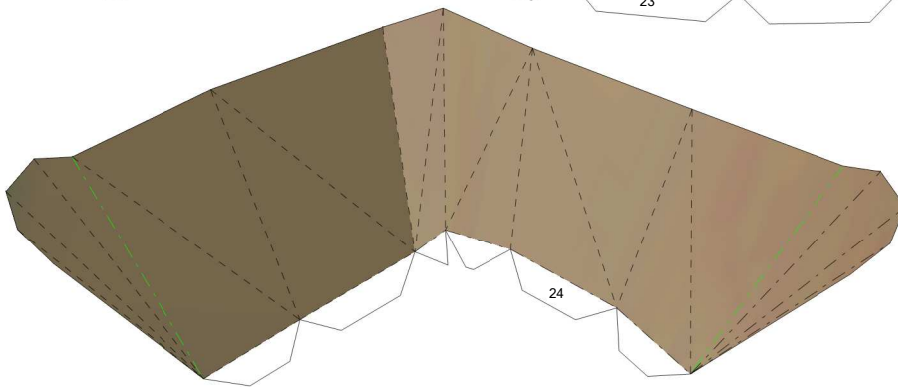
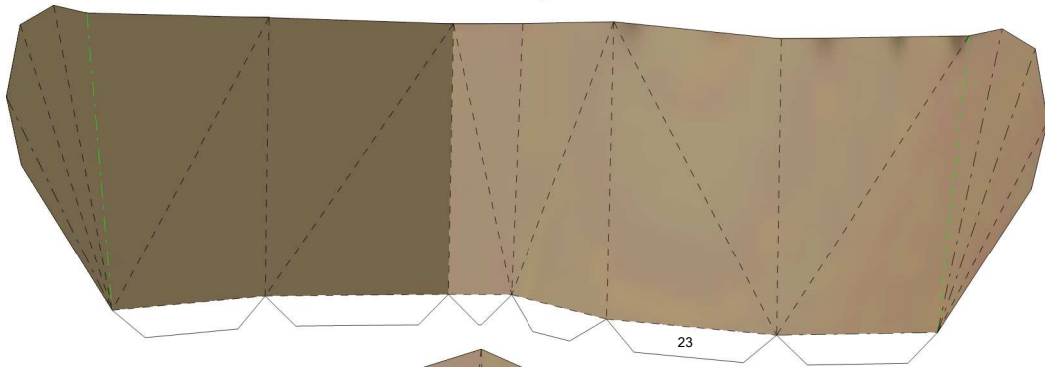
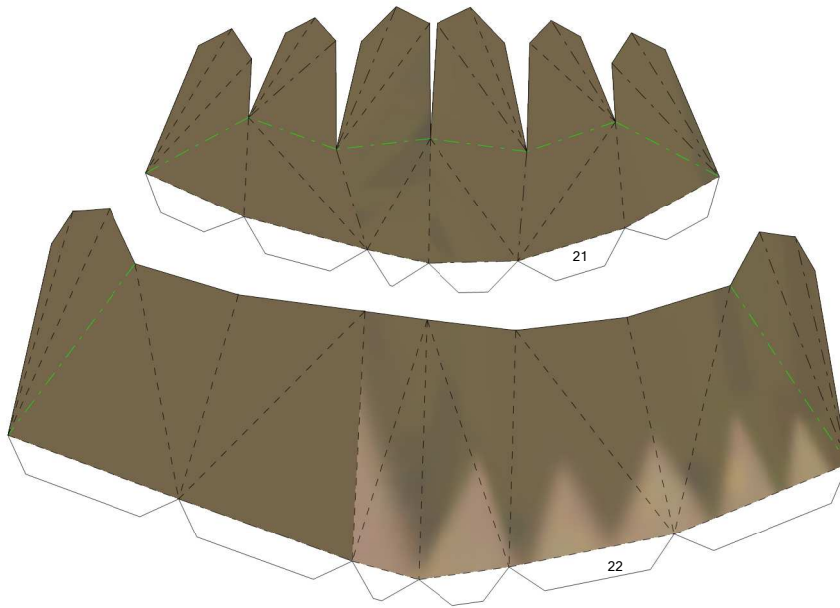
Build the legs from the fingers up. Reinforce them from the inside.

After piece 20, you can either build the open wings, the closed wings or mix them. But before gluing the wings, make sure to glue the legs. If you're building the open ones follow with the black numbers, in case your building the open ones, follow with the green numbers.

Glue the wings BEFORE closing the body. Both sets of wings glue at the same time, after the body's been built and the legs glued. After the body is built, don't close it just now, put the head and see if it stands, it took me some weight inside, a coin should do.

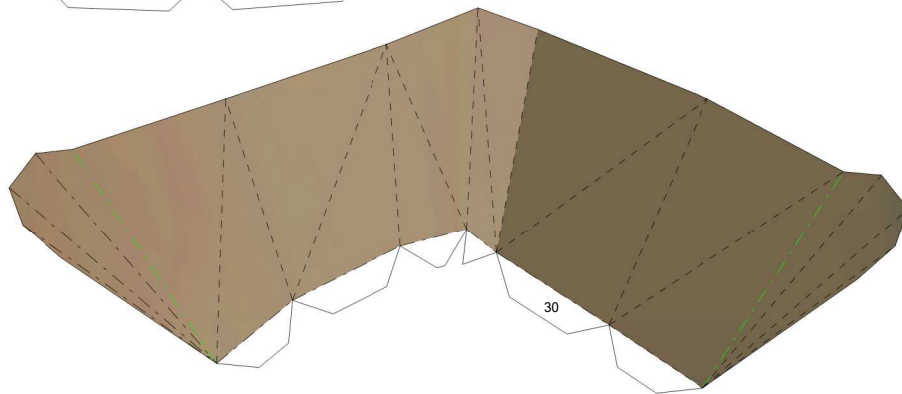
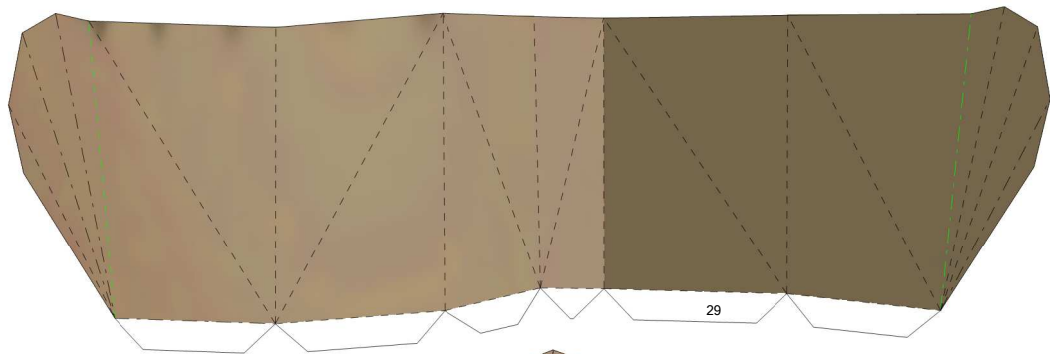
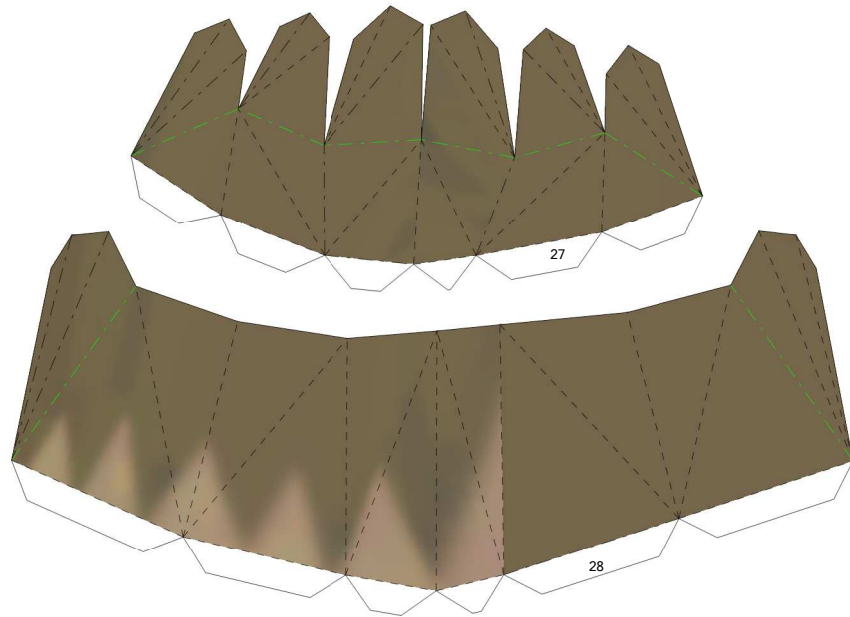


Right

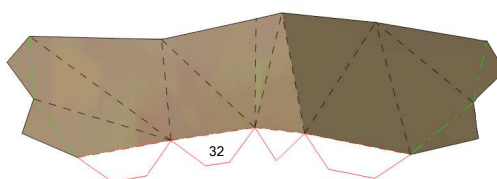
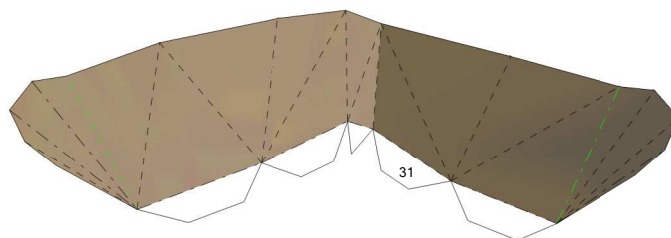


Superglue helps gluing the wings.
If you're not using superglue, be
sure to stand still while the glue dries
and apply pressure from the inside.

Left



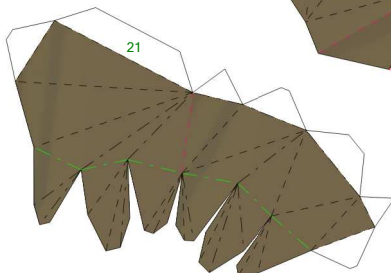
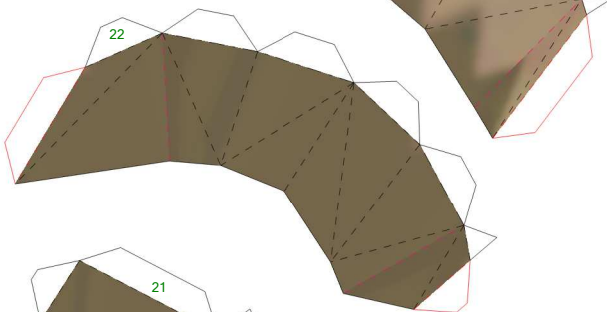
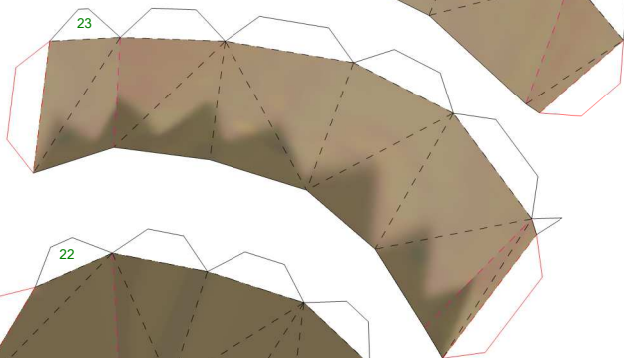
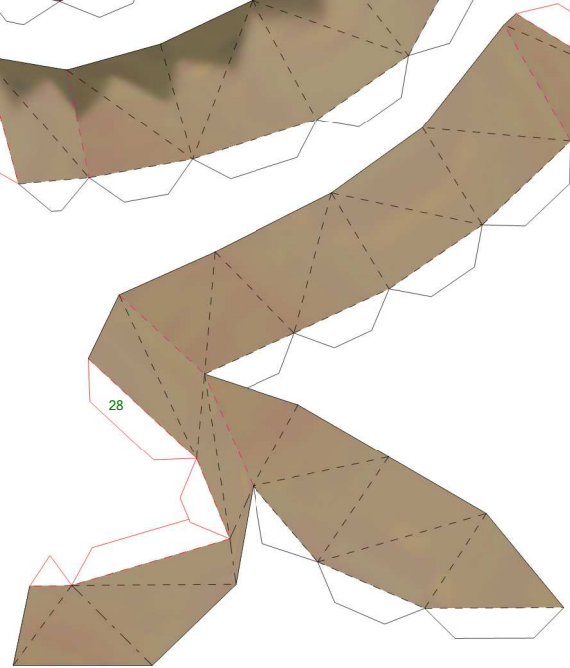
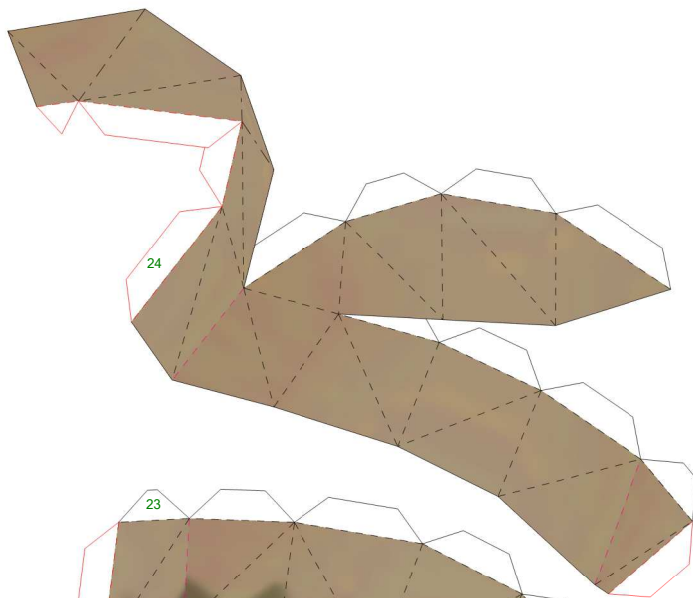
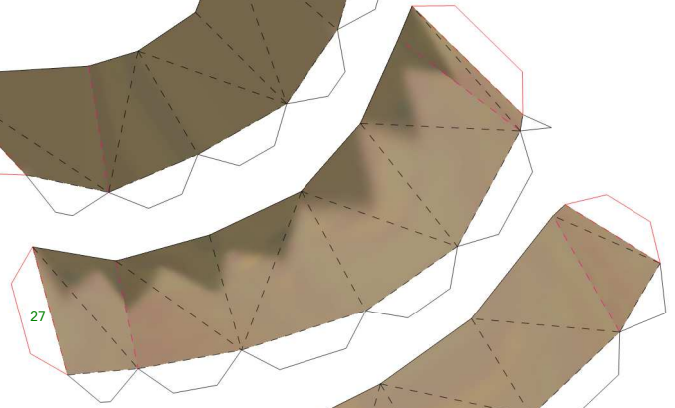
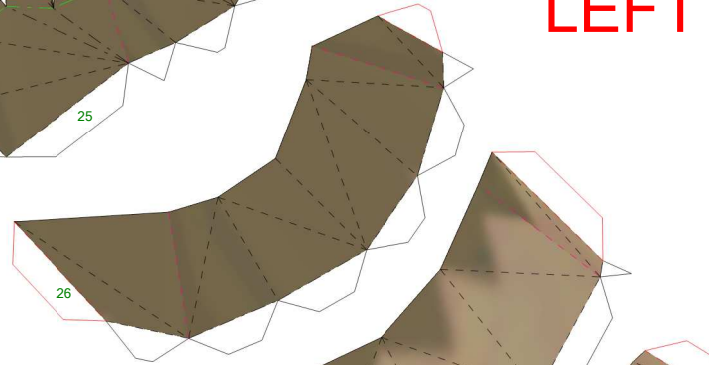
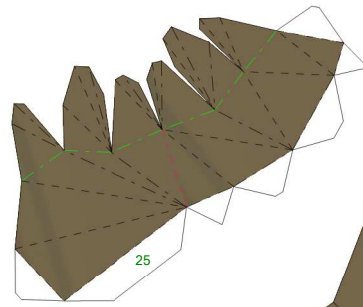
Use the parts delimited by the green lines to glue the two sides of the pieces together. It's important to fold these lines to give the wings the right shape. Also, rounding the pieces with a pencil before building the wing helps with the shape.



CLOSED WINGS

The tip of the closed wings follow the same building process of the open ones. Glue the parts limited by the green lines together.

Start the closed wings at the tip and build by numbers until you get to the top.



LEFT

RIGHT